

HIGH QUALITY MUSIC HORN FOR EXCELLENT SPEECH AND MUSIC REPRODUCTION •

TWO-WAY SYSTEM •

HIGH SENSITIVITY •

WIDE OPENING ANGLE •

SIMPLE POWER SETTING •

WATER AND DUST PROTECTED TO IP 65 •

ATTRACTIVE ABS HOUSING •

COMPLIES WITH INTERNATIONAL INSTALLATION AND SAFETY REGULATIONS •

The Philips LBC 3700/00 Horn Loudspeaker features an extended frequency range and high sensitivity which makes it ideal for high quality speech and music reproduction. The wide opening angle ensures even sound distribution, so fewer horns are needed to cover a given area.

#### Two-way system

The rectangular horn features a unique combination of a re-entrant horn with two transducers, one for low- and the other for high frequencies, resulting in breathtaking sound clarity.

#### Weatherproof housing

The horn is weather protected to IEC529-IP65, it can be used in areas with high humidity. It is therefore suitable for outdoor applications such as swimming pools, sports stadiums, leisure parks, cruise ships, schools and train stations, as well as for indoor public address. Finished in light grey RAL 7035 color, the ABS horn is both stylish and lightweight.

#### Power setting

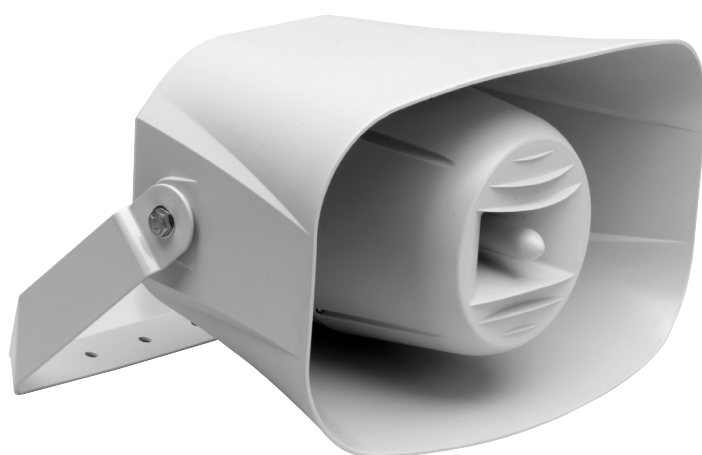
The 100V horn loudspeaker includes a transformer with taps on the primary winding for different power settings. Nominal full-power, half-power, quarter-power or eighth-power radiation (i.e. in 3 dB steps) can easily be selected by connected the 100V line to the appropriate tap.

#### Mounting

The horn loudspeaker is supplied with a sturdy aluminium (corrosion resistant) mounting bracket allowing the sound beam to be accurately directed.

#### Quality assurance

All Philips loudspeakers are designed to withstand operating at their rated power for 100 hours in accordance with IEC 268-5 Power Handling Capacity (PHC) standards. Philips has also developed the Simulated Acoustical Feedback Exposure (SAFE) test to demonstrate that they can withstand two times their rated power for short durations. This ensures extra



**L B C 3 7 0 0 / 0 0**

HORN LOUDSPEAKER

reliability under extreme conditions, leading to higher customer satisfaction, longer operating life, and much less chance of failure or performance deterioration.

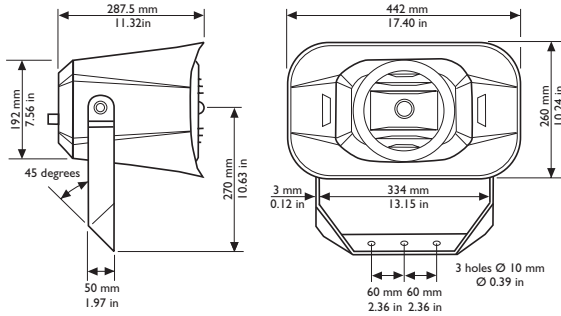
#### Safety aspects

The enclosure is made from high-impact self-extinguishing ABS (acc. to class UL 94V0). In common with all Philips products, care is taken to meet high safety standards. This horn loudspeaker complies with the relevant safety and installation regulations of EN 60065.

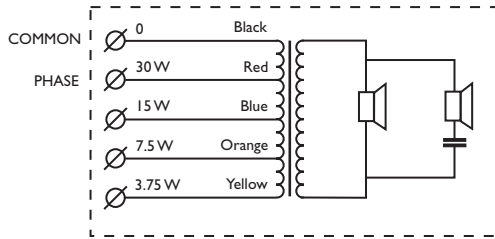
**SPECIFICATIONS**

# LBC 3700/00

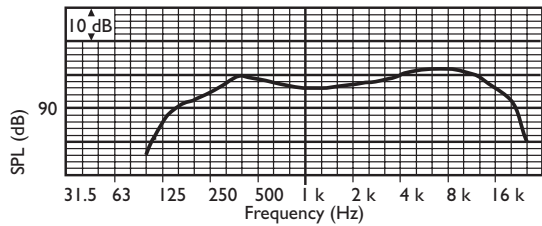
HORN LOUDSPEAKER



Dimensions (in mm/in)



Circuit diagram



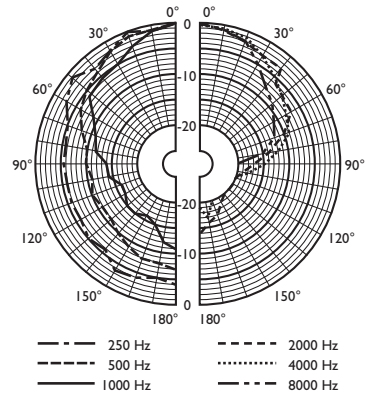
Frequency response

Octave band (Hz)	125	250	500	1 k	2 k	4 k	8 k
SPL l.l	88	97	97	97	98	100	102
SPL max.	103	112	112	112	113	115	117
Q-Factor	1.4	2.2	3.7	7.1	8.5	7.4	16.2
Efficiency	0.6	2.8	1.7	0.9	0.9	1.7	1.2
Hor. angle	360	360	120	105	85	90	65
Vert. angle	360	360	200	110	100	125	55

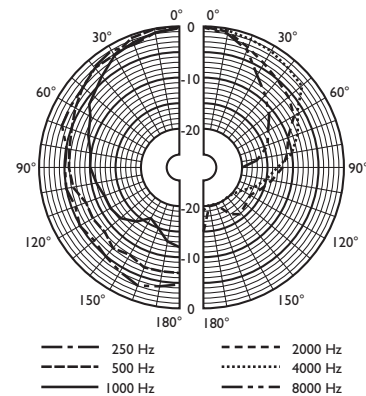
**TECHNICAL PERFORMANCE DATA ACC. TO IEC 268-5**

**LBC 3700/00**

<b>Maximum power</b>	45 W
<b>Rated power (PHC)</b>	30 W (30 - 15 - 7.5 - 3.75 W)
<b>Sound pressure level at 30 W/1 W</b> (at 1 kHz, 1 m)	112 dB/97 dB (SPL)
<b>Effective frequency range (-10 dB)</b>	125 Hz to 20 kHz
<b>Opening angle (at 1 kHz/4 kHz, -6 dB)</b>	
<b>horizontal</b>	105°/90°
<b>vertical</b>	110°/125°
<b>Rated voltage</b>	100 V
<b>Rated impedance</b>	333 Ω
<b>Ambient temperature range</b>	-25 to +55 °C
<b>Safety</b>	acc. to EN 60065
<b>Water protected</b>	acc. to IEC 60529 IP 65
<b>Connection</b>	screw terminal block
<b>Dimensions (h x w x d)</b>	260 x 442 x 287.5 mm (10.2 x 17.4 x 11.3 in)
<b>Colour</b>	light grey (RAL 7035)
<b>Weight</b>	5 kg (11 lbs)



Polar diagram horizontal (measured with pink noise)



Polar diagram vertical (measured with pink noise)



# PHILIPS

Let's make things better.